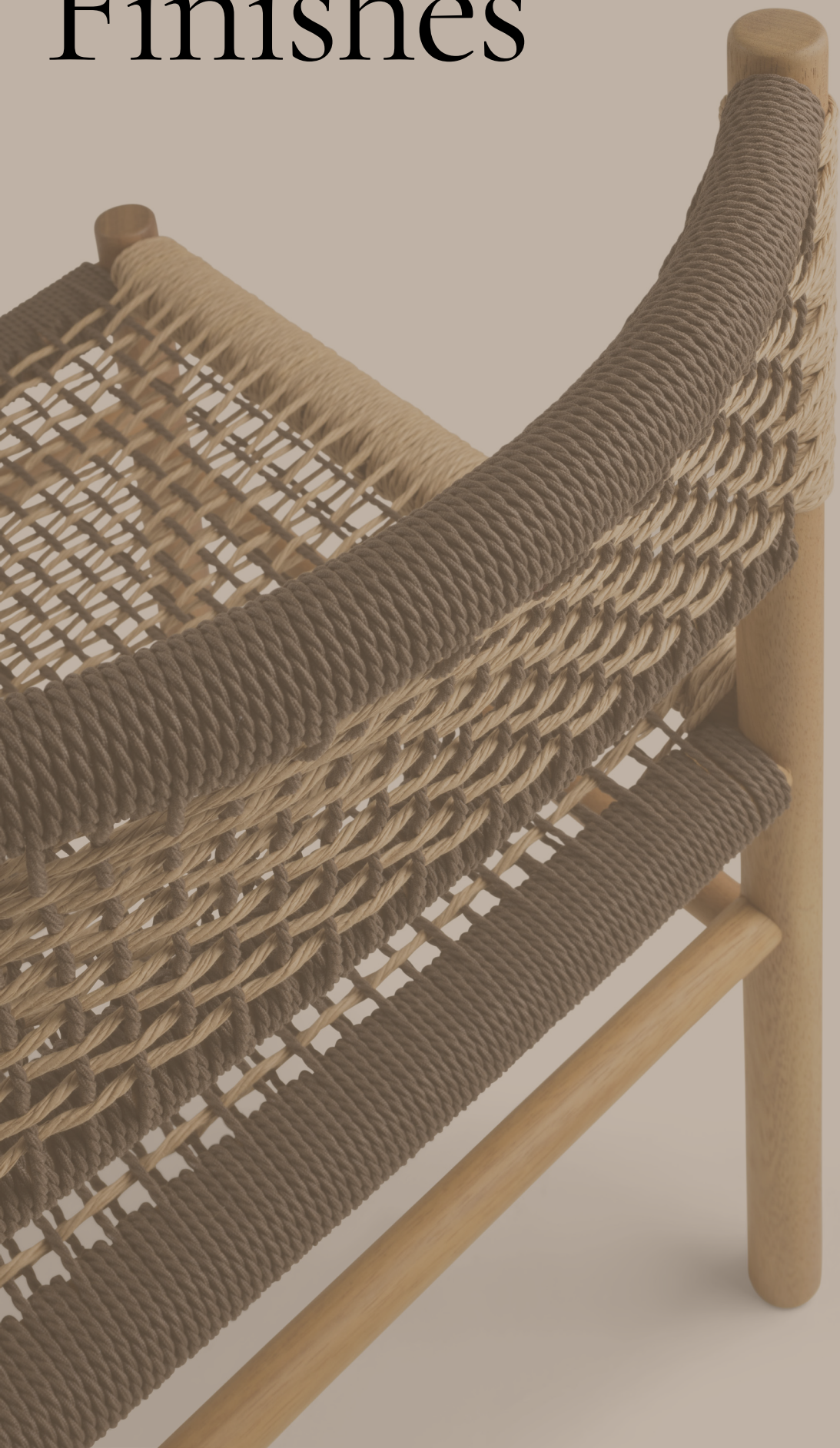


Billiani Finiture / Finishes



Billiani Finiture/Finishes

Le finiture sono una componente imprescindibile del nostro design. Se il legno è quello di frassino, faggio, rovere e noce, colori e tessuti esprimono lo spirito del momento.

/Our finishes are an essential component of Billiani design. Whether the wood be ash, beech, oak or walnut, it's the colours and fabrics that express the spirit of the moment.

Legno / Wood

FAGGIO / BEECHWOOD



Sbiancato
FG 0078



Naturale
FG 0003



Noce
FG 0012



Wengé
FG 0025

FRASSINO / ASHWOOD



Sbiancato
FR 0065



Naturale
FR 0076



Tabacco
FR 0035



Wengé
FR 0047

ROVERE / OAKWOOD (Disponibile solo per Foglia / Available only for Foglia)



Sbiancato
RO 0034



Naturale
RO 0046



Tabacco
RO 0035



Wengé
RO 0047

NOCE / WALNUT (Disponibile solo per Grapevine e Colonna / Available only for Grapevine and Colonna)



Noce
0000

IROKO (Disponibile solo per Harry's / Available only for Harry's)



Iroko
IR-001

Tinta o laccatura del legno / Wood staining or lacquering



Laccato
/Lacquered

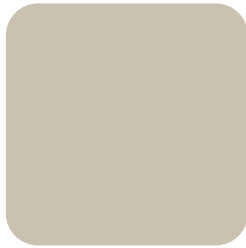


Tinto
/Stained

Le essenze legno sono disponibili in versione tinta o laccata, nei seguenti colori.
/Wood is available lacquered or stained in the following colours.



Bianco
RAL 9016



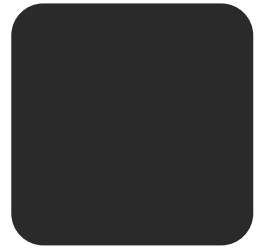
Sabbia
NCS 2005 Y30R



Seta
RAL 7044



Brunastro
RAL 7013



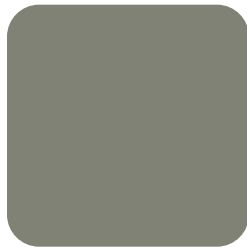
Nero
RAL 9017



Antracite
RAL 7016



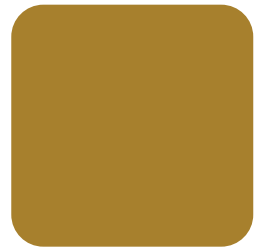
Bluastro
RAL 7031



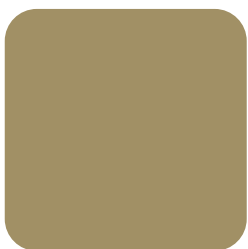
Cemento
RAL 7033



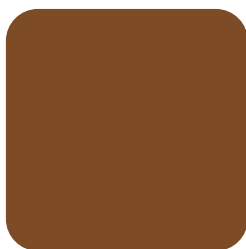
Cromo
RAL 6020



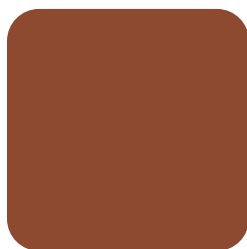
Curry
RAL 1027



Olivastro
RAL 1020



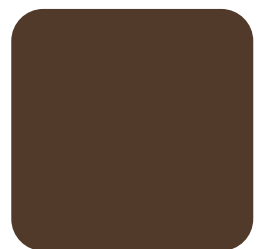
Fango
RAL 8003



Rame
RAL 8004



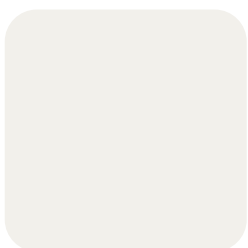
Porpora
RAL 3004



Terra
RAL 8028

Acciaio / Steel

LACCATO / LACQUERED (Altri colori scala RAL disponibili su richiesta / Non standard RAL colours available on request)



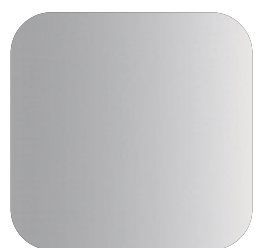
Bianco
RAL 9016



Nero
RAL 9017



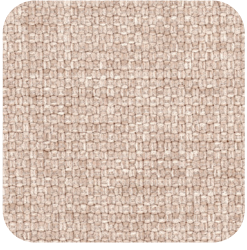
Grigio seta
RAL 7044



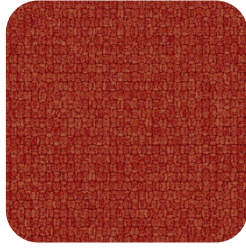
Cromato
/ Chromed

Tessuti / Fabrics

TIME (Cat. Essential)



2868



3080



2870

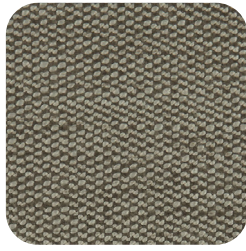


3081

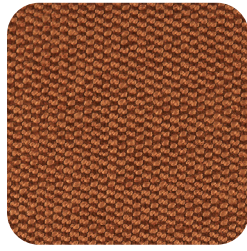
ANTIBES (Cat. Select)



3125



3126



3121



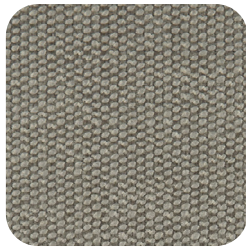
3122



3120



3124



3119

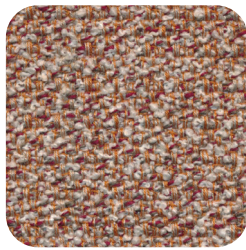


3123

BOEMIAN (Cat. Select)



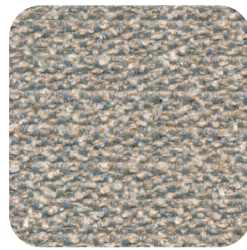
3073



3075



3076



3074

Tessuti / Fabrics

NEVADA (Cat. Select)



3127



3129



3130



3132



3131



3134



3128



3133

TRESIGALLO (Cat. Select)



2892



2893



2897



2896



3077



2894



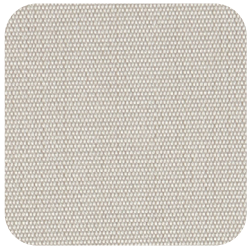
2895



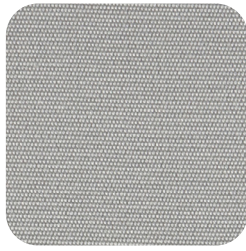
2898

Tessuti / Fabrics

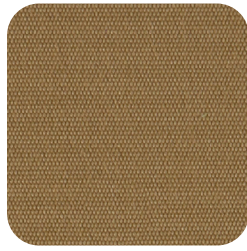
VORTICE (Cat. Select)



2972



2975



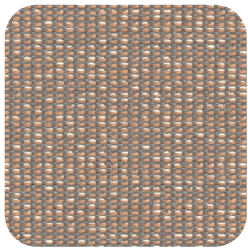
2973



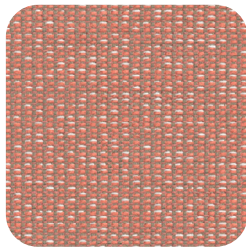
2974



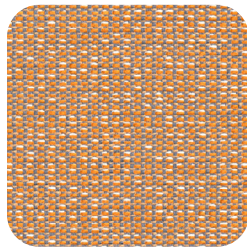
ZENITH (Cat. Select)



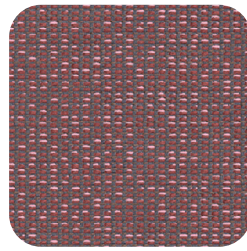
3058



3051



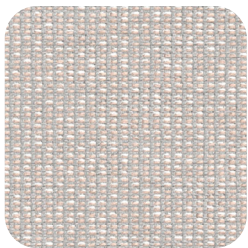
3055



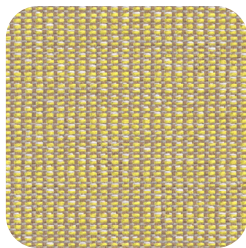
3054



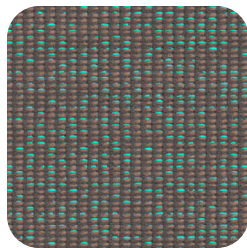
3059



3057

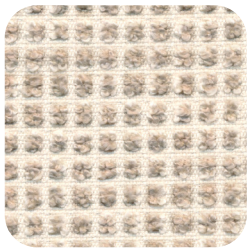


3056



3052

BRIONNE (Cat. Tailored)



3072



3071



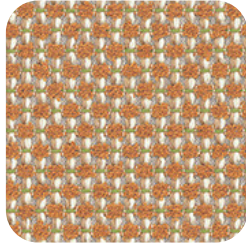
3070

Tessuti / Fabrics

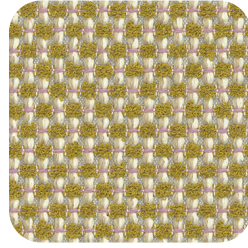
MOORE (Cat. Tailored)



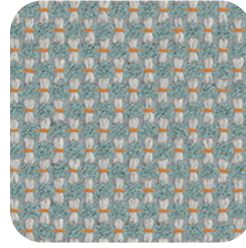
3084



3083



3082



3085

PUNTO (Cat. Tailored)



3060



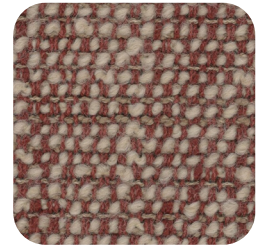
3061



3063



3069



3064



3065



3062



3067



3068



3066

ARIANA (Cat. Unique)



3095



3099



3096



3098



3100



3092



3091



3093



3094



3097

Caratteristiche tessuti / Fabric features

TIME (Cat. Essential)



Composizione / Composition	100% RECYCLED PL
Altezza / Width	140 cm
Peso / Weight	490 gr/ml - 350 gr/sqm
Martindale (res. all'abrasione / Abrasion res.)	100.000 cicli / rubs
Pilling	5
Solidità allo sfregamento / Rub fastness	dry 4-5
Solidità alla luce / Light fastness	6
Resistenza al fuoco/ Flame resistance	UNI 9175, 1 IM ; EN 1021, 1-2 ; BS 5852 CRIB 5 ; BS 7176 Medium Hazard ; CAL TB 117:2013

ANTIBES (Cat. Select)



Composizione / Composition	90%PL; 10% VI WITH FR BACKING
Altezza / Width	144 cm
Peso / Weight	1.080 gr/ml
Martindale (res. all'abrasione / Abrasion res.)	50.000 cicli / rubs
Pilling	4
Solidità allo sfregamento / Rub fastness	dry 4-5 / wet 3-4
Solidità alla luce / Light fastness	4-5
Resistenza al fuoco/ Flame resistance	UNI 9175, 1 IM ; EN 1021, 1-2 ; BS 5852, 0-1 ; CAL TB 117:2013; IMO 2010 FTP CODE part 8 ; NFPA 260

BOEMIAN (Cat. Select)



Composizione / Composition	5%CO; 25%VI; 13%LI; 15%WO; 25%PL; 15%PC; 2%PA
Altezza / Width	137 cm
Peso / Weight	850 gr/ml - 620 gr/sqm
Martindale (res. all'abrasione / Abrasion res.)	45.000 cicli / rubs
Pilling	4
Solidità allo sfregamento / Rub fastness	dry 4-5 / wet 2-3
Solidità alla luce / Light fastness	4-5
Resistenza al fuoco/ Flame resistance	BS 5852, 0-1 ; CAL TB 117:2013

NEVADA (Cat. Select)



Composizione / Composition	100%PL
Altezza / Width	140 cm
Peso / Weight	1.000 gr/ml
Martindale (res. all'abrasione / Abrasion res.)	30.000 cicli / rubs
Pilling	4-5
Solidità allo sfregamento / Rub fastness	dry 4 / wet 3-4
Solidità alla luce / Light fastness	5
Resistenza al fuoco/ Flame resistance	BS 5852, 0-1 ; NFPA 260

Caratteristiche tessuti / Fabric features

TRESIGALLO (Cat. Select)



Composizione / Composition	22%WV; 22%PC; 22%PL; 14%VI; 13%CO; 7%LI - RECYCLED COTTON
Altezza / Width	140 cm
Peso / Weight	810 gr/ml - 580 gr/sqm
Martindale (res. all'abrasione / Abrasion res.)	30.000 cicli / rubs
Pilling	4
Solidità allo sfregamento / Rub fastness	dry 4-5 / wet 3
Solidità alla luce / Light fastness	5-6
Resistenza al fuoco/ Flame resistance	EN 1021, 1-2 ; BS 5852, 0 ; CAL TB 117:2013

VORTICE (Cat. Select)



Composizione / Composition	72% ACRILIC (WATER REPELLENT); 18% PVC
Altezza / Width	155 cm
Peso / Weight	305 gr/ml
Solidità allo sfregamento / Rub fastness	dry 4-5 / wet 5
Solidità alla luce / Light fastness	7-8
Resistenza al fuoco/ Flame resistance	EN 1021 part 1/2 ; California TB 117-2013 ; IMO FTP CODE 307

ZENITH (Cat. Select)



Composizione / Composition	100% RECYCLED PL - FR
Altezza / Width	146 cm
Peso / Weight	523 gr/ml
Martindale (res. all'abrasione / Abrasion res.)	90.000 cicli / rubs
Pilling	4
Solidità allo sfregamento / Rub fastness	dry 4-5 / wet 4-5
Solidità alla luce / Light fastness	6
Resistenza al fuoco/ Flame resistance	EN 1021, 1-2 ; BS 5852 CRIB 5 ; NF P92-503, M1 ; DIN 4102, B1 ; CAL TB 117:2013 ; IMO 2010 FTP CODE part8; NFPA 260

BRIONNE (Cat. Tailored)



Composizione / Composition	18% CO; 31% PL; 26% WO; 22% PC; 3% PA
Altezza / Width	140 cm
Peso / Weight	740 gr/ml - 529 gr/sqm
Martindale (res. all'abrasione / Abrasion res.)	40.000 cicli / rubs
Pilling	3-4
Solidità allo sfregamento / Rub fastness	dry 4-5 / wet 2-3
Solidità alla luce / Light fastness	4-5
Resistenza al fuoco/ Flame resistance	BS 5852, 0 ; CAL TB 117:2013

Caratteristiche tessuti / Fabric features

MOORE (Cat. Tailored)



Composizione / Composition	100% RECYCLED PL - FR
Altezza / Width	141 cm
Peso / Weight	835 gr/ml
Martindale (res. all'abrasione / Abrasion res.)	70.000 cicli / rubs
Pilling	4-5
Solidità allo sfregamento / Rub fastness	dry 4-5 / wet 4-5
Solidità alla luce / Light fastness	6
Resistenza al fuoco/ Flame resistance	EN 1021, 1-2 ; BS 5852 CRIB 5 ; NF P92-503, M1 ; DIN 4102, B1 ; CAL TB 117:2013 ; IMO 2010 FTP CODE part8 ; NFPA 260

PUNTO (Cat. Tailored)



Composizione / Composition	26%CO; 12%WO; 20%VI; 20%PL; 12%PC; 10%PA
Altezza / Width	140 cm
Peso / Weight	915 gr/ml - 654 gr/sqm
Martindale (res. all'abrasione / Abrasion res.)	100.000 cicli / rubs
Pilling	4
Solidità allo sfregamento / Rub fastness	dry 4-5 / wet 2-3
Solidità alla luce / Light fastness	4-5
Resistenza al fuoco/ Flame resistance	BS 5852, 0-1 ; CAL TB 117:2013

ARIANA (Cat. Unique)



Composizione / Composition	100% WM MOHAIR (base: cotton)
Altezza / Width	140 cm
Peso / Weight	765 gr/ml
Martindale (res. all'abrasione / Abrasion res.)	90.000 cicli / rubs
Pilling	4-5
Solidità allo sfregamento / Rub fastness	dry 4-5 / wet 4-5
Solidità alla luce / Light fastness	5
Resistenza al fuoco/ Flame resistance	EN 1021, 1-2 ; BS 5852 CRIB 5 ; NF P92-503, M2 ; IN 4102, B2 ; CAL TB 117:2013 ; IMO 2010 FTP CODE part 8 ; NFPA 260

Timènt

GRETO (Cat. Tailored)



2634



2631



2630



2633



2632



2629



2627



2628



2623



2624



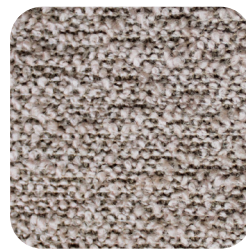
2625



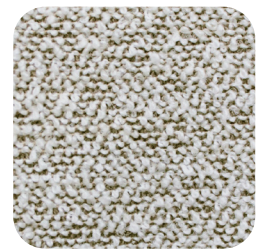
2626



2620



2622



2621

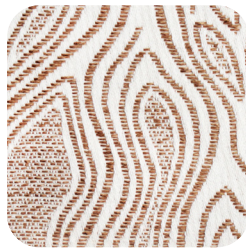
GOLENA (Cat. Tailored)



2616



2617



2618



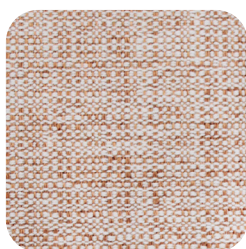
2619



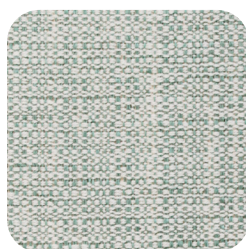
2612



2615



2614



2613

Caratteristiche tessuti Timènt / Timènt fabric features

GRETO (Cat. Tailored)

Composizione / Composition	Greto Unito 52%CO-20%WO-18%PC-10%PA Greto Pattern 45%CO-23%WO-12%PA-20%PC
Martindale (res. all'abrasione / Abrasion res.)	35.000 cycles +/- 10% UNI EN ISO 12947-2:2000
Pilling	4-5 (change at 5.000 turns) UNI EN ISO 12945-2:2002
Solidità allo sfregamento / Rub fastness	dry 4-5 / wet 2-3 (Black WET 2) UNI EN ISO 105-X12:1995
Resistenza al fuoco/ Flame resistance	BS 5852:2006 CIGARETTE BS 5852:2006 MATCH CAL TB 117:2013

GOLENA (Cat. Tailored)

Composizione / Composition	Golena Unito 60%CO-35%CA-5%PA Golena Pattern 50%CO-43%CA-7%PA
Martindale (res. all'abrasione / Abrasion res.)	35.000 cycles +/- 10% UNI EN ISO 12947-2:2002
Pilling	3-4 (change at 5.000 turns) UNI EN ISO 12947-2:2000
Solidità allo sfregamento / Rub fastness	dry 4-5 / wet 2-3 (Black WET 2) UNI EN ISO 105-X12:1995
Resistenza al fuoco/ Flame resistance	BS 5852:2006 CIGARETTE BS 5852-1 (1979) MATCH

CRIB 5: Timènt is optionally available in the COUTURE price category to include Billiani-supplied and fitted Crib 5 interliner

Eco-pelle e Pelle / Faux leather and Leather

RODEO (Cat. Essential)



3108



3112



3110



3109



3111

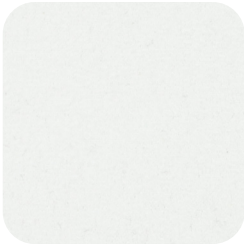


3113



3114

VEGAN NABUK (Cat. Tailored)



3101



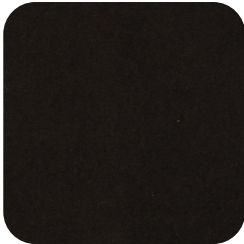
3102



3107



3105



3103



3106



3104

Eco-pelle e Pelle / Faux leather and Leather

SOFT UNITO (Cat. Tailored)



3079



2834



3078



2328

FARD (Cat. Couture)



3086



3087



3090



3089



3088

Caratteristiche Eco-pelle e Pelle / Faux leather and Leather features

RODEO (Cat. Essential)



Composizione / Composition	87,5% PVC; 8,1% PL; 4,4% CO
Spessore / Thickness	1 mm
Altezza / Width	140 cm
Peso / Weight	640 gr/sqm
Martindale (res. all'abrasione / Abrasion res.)	300.000 cicli / rubs
Solidità allo sfregamento / Rub fastness	dry 4-5 / wet 4-5
Solidità alla luce / Light fastness	6-7
Resistenza al fuoco/ Flame resistance	UNI 9175, 1 IM ; EN 1021, 1-2 ; BS 5852, 1 ; BS 7176 Low Hazard ; CAL TB 117:2013 ; IMO 2010 FTP CODE part 8 ; NF P92-503, M2

VEGAN NABUK (Cat. Tailored)



Composizione / Composition	100% RECYCLED PL
Spessore / Thickness	0,7 mm
Altezza / Width	140 cm
Peso / Weight	520 gr/sqm
Martindale (res. all'abrasione / Abrasion res.)	40.000 cicli / rubs
Pilling	4-5
Solidità allo sfregamento / Rub fastness	dry 4-5 / wet 3-4
Solidità alla luce / Light fastness	4
Resistenza al fuoco/ Flame resistance	BS 5852, 0 ; CAL TB 117:2013

SOFT UNITO (Cat. Tailored)



Composizione / Composition	100% PELLE BOVINA/BOVINE LEATHER
Spessore / Thickness	0,9-1,1 mm
Solidità allo sfregamento / Rub fastness	dry 4 / wet 4 (Norma/Norm EN ISO 11640)
Solidità alla luce / Light fastness	5
Resistenza al fuoco/ Flame resistance	EN 1021, 1

CRIB 5: Soft Unito is optionally available in the COUTURE price category to include Billiani-supplied and fitted Crib 5 interliner

FARD (Cat. Couture)



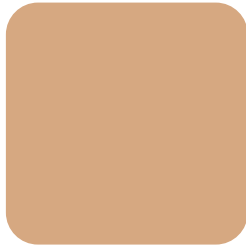
Composizione / Composition	100% PELLE BOVINA/BOVINE LEATHER
Spessore / Thickness	1,2-1,3 mm
Solidità allo sfregamento / Rub fastness	dry 4-5 / wet 4 (Norma/Norm EN ISO 11640)
Solidità alla luce / Light fastness	5
Resistenza al fuoco/ Flame resistance	EN 1021, 1-2 ; BS 5852, 0-1 ; CAL TB 117:2013

Finiture speciali / Special Finishes

CUOINETTO / HIDE



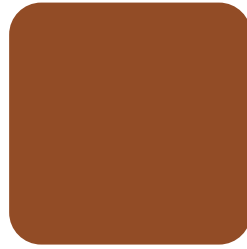
0537 •••



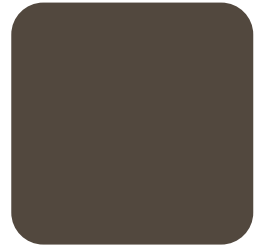
2336 •



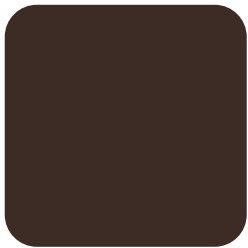
2334 •



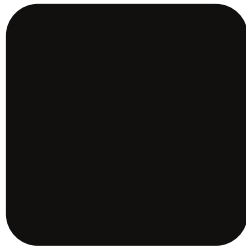
2340 ••



2335 •



1545 •••



0536 •••

Le seguenti finiture sono abbinabili soltanto ad alcuni prodotti.

/ The following finishes can be matched only with some products.

••• Disponibile solo per / Available only for Marimba, Vincent v. G., Fratina

•• Disponibile solo per / Available only for Marimba, Vincent v. G.

• Disponibile solo per / Available only for Marimba

FELTRO / FELT (Disponibile solo per Marimba / Available only for Marimba)



2506



2471



2508



2470



2509



2510



2511



2511

Finiture speciali / Special Finishes

CORDA NAUTICA/ NAUTICAL ROPE (Disponibile solo per B.Outdoor, Load e Sey / Available only for B.Outdoor, Load and Sey)



Bianco / White
001



Nero / Black
006



Marrone / Brown
003



Canapa / Hemp
005



CORDA NAUTICA A TRE CAPI/ THREE-STRAND NAUTICAL ROPE (Disponibile solo per Harry's / Available only for Harry's)



Cacao
028



Tibetan Red
029



CORDINO IN CELLULOSA / CELLULOSE ROPE (Disponibile solo per Fratina, Harry's, Load e Vincent v. G. / Available only for Fratina, Harry's, Load and Vincent v. G.)



Avana / Hemp
0530



Piani tavoli / Table tops

FAGGIO IMPIALLACCIATO / BEECH VENEER



Sbiancato
FG 0078



Naturale
FG 0003



Noce
FG 0012



Wengé
FG 0025

FRASSINO IMPIALLACCIATO / ASH VENEER



Sbiancato
FR 0065



Naturale
FR 0076



Tabacco
FR 0035



Wengé
FR 0047

NOCE IMPIALLACCIATO / WALNUT VENEER

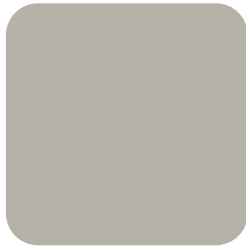


Noce
0000

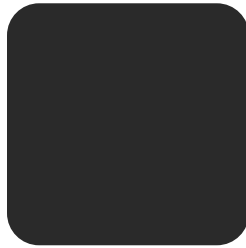
LAMINATO / LAMINATED



Bianco
RAL 9016

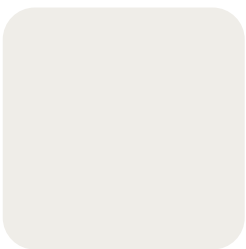


Seta
RAL 7044



Nero
RAL 9017

HPL O MDF LACCATO / LAQUERED MDF OR HPL



Bianco
RAL 9016



Nero
RAL 9017

Piani tavoli / Table tops

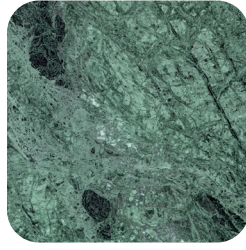
MARMO / MARBLE



Carrara



Marquina



Guatemala



Daino Reale

TRAVERTINO / TRAVERTINO MARBLE (Disponibile solo per tavoli Corolla / Available only for Corolla tables)



Classic Travertino

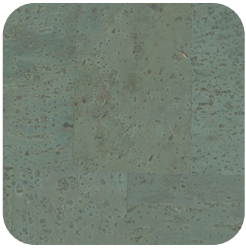


Red Travertino



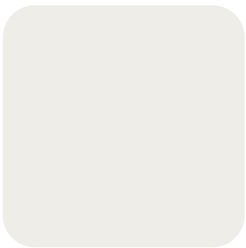
Travertino Noce

SUGHERO / CORK (Disponibile solo per Corolla 280 / Available only for Corolla 280)

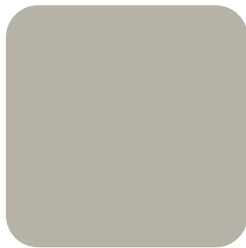


Doveblue

VETRO / GLASS (Disponibile solo per tavoli Marcel / Available only for Marcel tables)

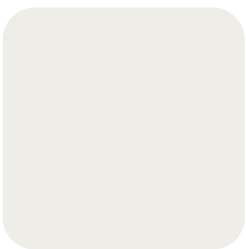


Extrachiaro
/ Extraclear

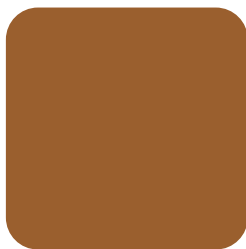


Fumè
/ Smoked

VETRO / GLASS (Disponibile solo per tavoli Stack / Available only for Stack tables)



Extrachiaro
/ Extraclear



Ambra / Amber



Verde / Green



Blu

Visita il nostro sito billiani.it
per scoprire le nostre collezioni e
realizzazioni.

/Visit us at billiani.it to discover our
collections and projects.

Billiani srl
Via della Roggia 28
33044 Manzano
(UD) Italia

T. +39) 0432 740180
F. +39) 0432 755953

E-mail: info@billiani.it
www.billiani.it

Follow us on:
Instagram, Facebook,
LinkedIn, WeChat,
Pinterest

Certificazioni / Certifications



The mark of
responsible forestry
FSC® C133671



Promoting
Sustainable Forest
Management
www.pefc.org



Ask for our FSC® and PEFC certified products

Billiani srl is member of
the Italian Flair & Synergy for Contract

100% made in Italy

